



Beech Class

2024





Attendance

Attendance

This is important not just for your child's learning, but also for their overall wellbeing, wider development and their mental health. As a parent, it can be difficult to know when to send your child into school if they are feeling unwell or mildly anxious, but finding solutions is a team effort between schools, parents and children.

Don't forget, we have the incredible support from our well-being practitioner, Mrs Jackson, too!





Punctuality

Punctuality

Children who arrive late can feel embarrassed, left out and miss out on important introductions to lessons. Punctuality is an essential life skill that needs to be taught from the very beginning.

Just 5 mins late a day adds up to 3 days (18hours) of lost learning time.





Uniform

School Uniform

Please ensure all uniform is labelled.

Leggings are not to be worn for school uniform.

No make-up, nail varnish and jewellery.

PE Kits – Tuesday and Wednesday

Green T-Shirt

Black bottoms

Trainers





Communication

Classroom Door

There is always a member of staff on the classroom door morning and afternoon. Please do let staff know any messages.

Office

You can call the office to pass messages to the class teacher during the day.





Communication

Facebook

We set up our facebook pages to help with work setting and communication throughout the pandemic. It worked brilliantly. It has not been without it's difficulties. We are now ready to introduce a new way of communicating with parents.



Class Dojo

Every child has brought home the log in letters that are needed. Let's look now....





Behaviour

As a school, we are focussing on our values and behaviours this year. Working with children to really understand what our behaviour should look like and feel like.

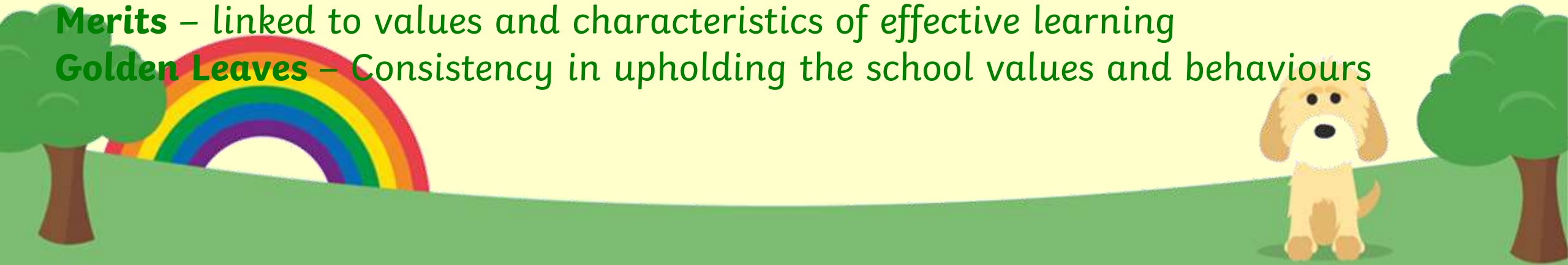
Lacewood Golden Rules

We look after ourselves,
We look after each other,
We look after our belongings

Class Dojo – points (replaces learning buddy books and leaves)

Merits – linked to values and characteristics of effective learning

Golden Leaves – Consistency in upholding the school values and behaviours





Behaviour

Mr Corker is our new behaviour lead in school.

Mr Corker will be working alongside our well-being practitioner (Mrs Jackson) to complete targeted interventions as well as supporting children throughout their day in school.

Mr Corker will work with children to help resolve incidents.
Mr Corker will contact you if there has been an incident.





Staff

Mrs Searle



Mrs Wake

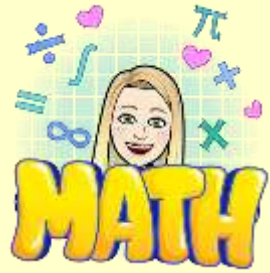


Mrs Guest





A Day in Beech Class



8:35 – 9:00 – Morning Task

9:00 – 9:45 – Reading

9:45 – 10:45 – Literacy

10:45 – 11:00 – Break

11:00 – 12:00 – Maths

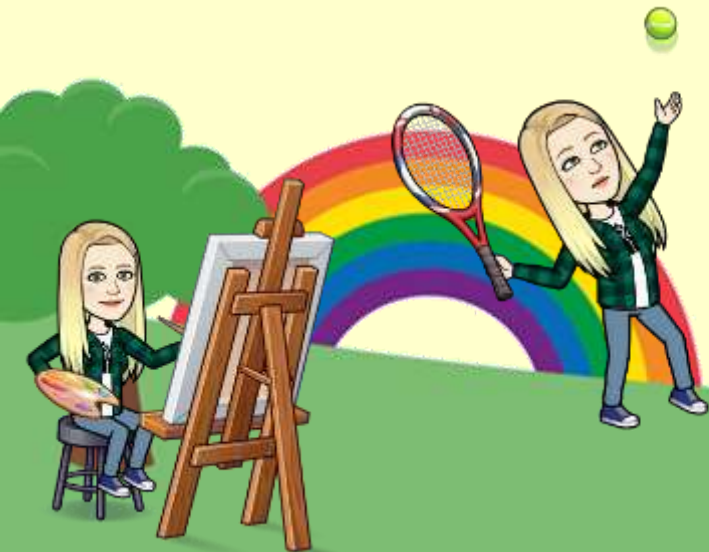
12:00 – 1:00 – Dinner

1:00 – 2:00 – Theme

2:00 – 2:15 – Assembly

2:15 – 3:00 – Theme

3:00 – 3:15 – Story Time





Wakey Wacky Wednesday



Beech Class Timetable 2024 – 2025 – Autumn Term

	Monday	Tuesday	Wednesday	Thursday	Friday
8:40 – 9:00	Morning Task	Morning Task	Morning Task - MW	Morning Task	Morning Task
9:00 – 9:45	Guided Reading	Guided Reading	Guided Reading - MW	Guided Reading	Guided Reading
9:45 – 10:45	Literacy	Literacy	Literacy – MW	Literacy	Literacy
10:45-11:00	MORNING PLAYTIME				
11:00 – 12:00	Numeracy	Numeracy	Numeracy – MW	Numeracy	Numeracy
12:00 – 1:00	LUNCH				
1:00 – 2:00	Science	French Music	PE – MW	Art	RE (1:00 – 2:00) PSHE (2:00 – 2:45) Assembly (2:45)
2.00 – 2.15	ASSEMBLY	ASSEMBLY	ASSEMBLY	ASSEMBLY	
2:15 – 3:15	Computing	PE	Thrive – MW Book Talk (3:00 – 3:15)	History	





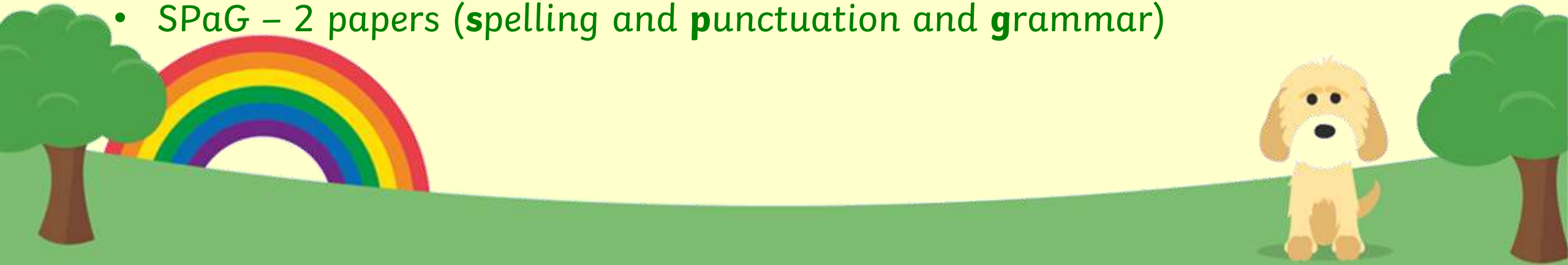
Assessments

In school, we formatively assess the children's learning every single lesson. Any misconceptions are dealt with quickly so that children are keeping up – not catching up.

Summative Assessments

We complete our summative assessments 3 times a year.

- Maths – 2 papers (arithmetic and reasoning)
- Reading – 1 paper (comprehension)
- SPaG – 2 papers (spelling and punctuation and grammar)





Learning

Maths

Numbers - numbers to 1million

Calculations – all four standard methods

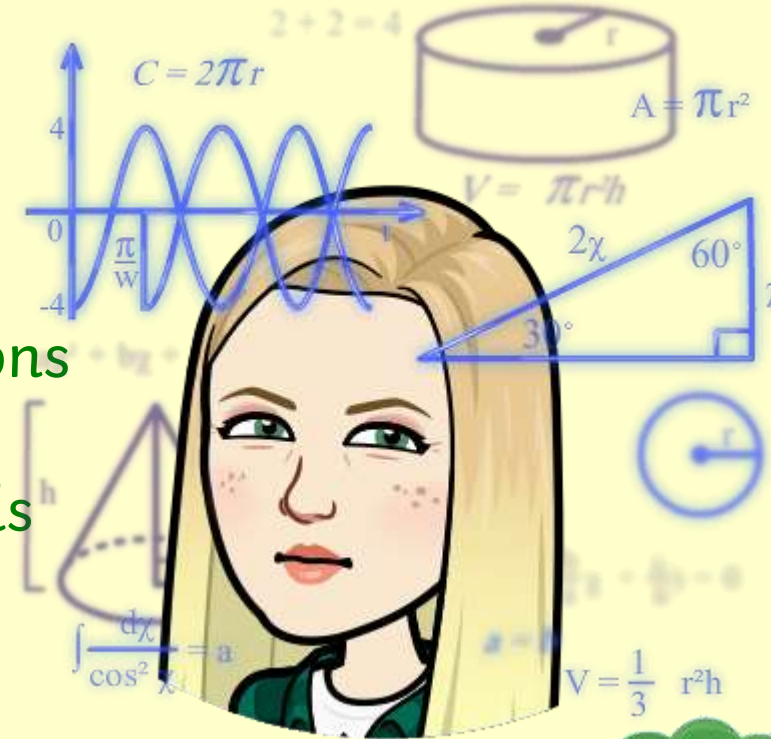
Fractions – multiplying, simplifying, improper conversions

Decimals – teneths, hundredths, thousandths

Percentages – converting between fractions and decimals

Angles – measuring, labelling, calculating

Measures – converting





Helping at Home

**TIMES
TABLES
ROCK
STARS**





Learning

Literacy

Spelling – Y1 – 4 common exception words, Y5 spelling patterns

Sentence work – Simple, compound and complex sentences

Handwriting – correctly sized, joined

Vocabulary – Accurate and specific

I went to the park. I played on the slide

I went to the park and played on the slide.

When I went to the park, I played on the slide.

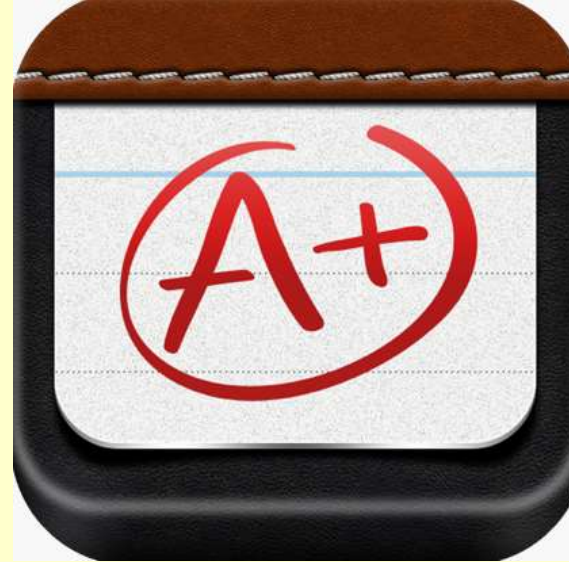




Helping at Home



Spelling Words –
Spell It Quiz



A+ Spelling





Learning

Reading

2a- Word Meaning

2b – Retrieve and Record

2c – Summarise main ideas

2d – inferences – with evidence and explanation

2e – Predict what might happen

2f – Making links within the text

2g – How words contribute to meaning

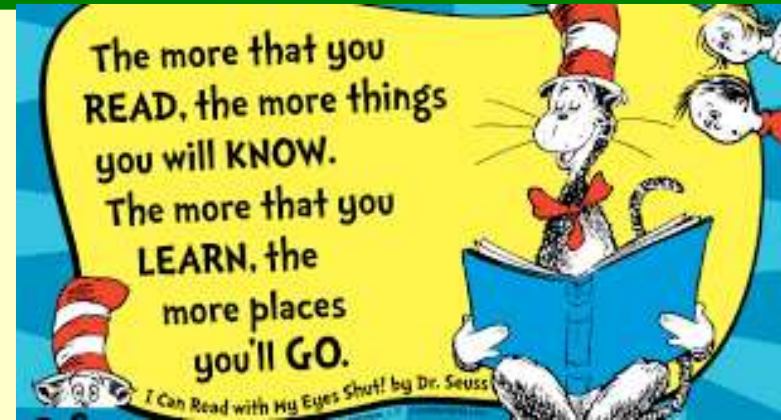
2h – Make comparisons within the text





Helping at Home

- Lead by example
- Listen to reading
- Read to your child
- Independent reading
- Be interested – ask questions
- Bribery - 'Buy' time for screens with reading tokens.





At Home - Overview

Subject	Frequency	Duration	Tool
Reading	Every Day	20mins	Books, magazines, vlogs
Spelling	3 times a week	5-10mins	Spelling apps Spelling games
Maths	3 times a week	5-10mins	TT Rockstars Mymaths





Themes



The Great War



Whitby



The Maya



Mexico



The Victorians



Titanic







Any Questions...





Sherwood Pines





Cadbury World





Cannon Hall Farm

